

REXON - THE COMPANY

Rexon Components, Inc. is the **second** spin-off from The Harshaw Chemical Co., a pioneer in the development of inorganic scintillators in this country, and in the free world. **Rexon** was incorporated in 1983 in the State of Ohio. Its first place of operation was actually a “garage” in Doylestown, Ohio, a suburb in the greater Cleveland-Akron metropolitan area. Its present location is in the heart of Cleveland’s premier corporate suburb, Beachwood, Ohio. Occupying over 10,000 sq.ft. of **owned** facility at Beachwood, it provides the entire line of scintillators, from NaI(Tl) to YAP and YAG, and from PVT based plastic scintillators to higher stopping power acrylic base plastic scintillation products. Rexon is the premier after-market supplier to the scintillation industry-servicing **ALL BRANDS OF MANUFACTURE REGARDLESS OF THE VINTAGE OR COUNTRY OF ORIGIN**. Rexon’s pioneering spirit for **SERVICE** encourages the customer to trade-in any failed, broken or otherwise scintillation detector assemblies for credit or cash! Alongside the dedication for repair and refurbishing of units, Rexon provides on an equal scale **NEW MANUFACTURED SCINTILLATION ASSEMBLIES** and **CRYSTALS** for OEM requirements, private label manufacturing and State-of-Art Units such as the record beating 51 mm diameter x 51 mm thick BGO exhibiting 9.2% FWHM energy resolution for 662 kev gamma excitation!

Dr. M. R. Farukhi, the founder of **REXON**, has served in various capacities at Harshaw ---Group Leader for Measurements (R/D), Director of Production Engineering, Marketing Engineer for Nuclear Detectors and finally as Manager - Nuclear Products and Systems. Several Publications of Dr. Farukhi now serve as references for the properties of Scintillators. Contact the factory or visit the website for a list of publications, notes and for requesting copies.

Products and services provided by REXON cover the entire gamut of products offered in the industry.

Scintillators **Inorganic Scintillators** such as NaI(Tl), CsI(Na), CsI(Tl), ZnS(Ag), BGO, LSO, YAP(Ce), YAG(Ce), CaF₂ (Eu), CdW₀₄, BaF₂, CsF, LiI(Eu) and others.

Plastic Scintillators (PVT-Base) equivalent and identical in performance to all the BC400 SERIES and the NE100 SERIES are available. In addition, Rexon supplies its own **RP 200**, the **LOWER COST and Higher DENSITY (Better Stopping Power)** PMMA base Plastic Scintillator. Sheets as large as 5 ft x 8 ft. are available.

Accessories Optical Coupling Greases, Reflective Paints, Epoxies, Voltage Dividers, Magnetic Shields, PMTs, and Electrical Connectors—BNC, MHV, SHV, C, SMA, and other Special Connectors.

Gas Filled Counters GM and Proportional counters, and ion chambers from the small room temperature (survey & monitor types) to high temperature tubes including the high sensitivity Bi-Screen Tubes are available from Rexon.

24500 Highpoint Road, Beachwood, OH 44122-1022 USA

(24 Hrs) Phone 440-585-7086

http: // www.rexon.com

Phone 216-292-7373

Fax 216-292-7714

1 June 2001

- Dosimeters** With the acquisition of the TLD phosphor assets of Victoreen (1999) and the acquisition of TLD Product Line of Teledyne Brown Engineering ES (2000), Rexon brings a **Whole New Dimension to the World of Personnel Dosimetry**. In addition to the well-known PTFE-Phosphor Line, Micro-Rods, and Ultra Thin (50 μ) dosimeters, TLD Phosphors such as TLD 100, 200, 300, 400, 500, 600, 700, 800, 900, and LiF (Mg, Cu, P), are now available in standard chips, rods and powder forms. Other sizes (your custom preference) are not only **WELCOMED but REQUESTED**.
- Cards** Chips, bars, rods, and discs are assembled with appropriate filters into multi-element cards, as many as 8 elements per card, for automated readers. Cards for Users of "THE TLD SYSTEM 300" will **now** be supported by **REXON**. Cards designed to fit **any other reader** will be manufactured per customer supplied specifications.
- Badges** Rexon supplies "Simply the Best Extremity Badge" made famous by Teledyne, "Our Sachet". This design has been re-engineered after acquisition of the tooling to fit **FINGERS OF ALL SIZES**. The pouch will fit not only our PTFE-Phosphor dosimeters, **BUT ALSO THEIRS**. The same philosophy has been extended to wrist badges. These are available in small, medium, and large sizes to fit any personnel exposed to radiation. All sizes are kept in stock for delivery within 48 hours of request.
- Plastic badge cases for the Teledyne System Series 300 will be manufactured by REXON. In addition, **badge cases for ANY DOSIMETER CARD** will be entertained per customer request and customer supplied specifications.
- Instruments** Sales and Support of the Teledyne TLD Instruments (>30 yrs.) will be supported by REXON. Older models can be traded-in for the System 310 or the System 300 Readers. An upgrade of the Manual Reader 310 is in development and will be introduced as the **Model 320**. The model 320 will be an Automated 200 magazine Reader for the PTFE/Phosphor as well as the CHIPSTRATE line of extremity dosimeters while retaining most of the manual attributes of the 310 Reader. Upgrade discounts will be offered on a declining time scale of ownership. Trade-in of OTHER BRANDS ARE WELCOME. CALL for **SERVICE** or **REPLACEMENT PARTS** for **any Reader**.
- After-Market** Rexon created the after market in Scintillators; we now bring the same philosophy to the TLD World of Personnel Monitoring and Dose Measurements. When its time for **Repair, Refurbish** or **Remanufacture**, its time to think **Rexon**.

GAMMA CAMERA CRYSTAL SERVICE

Rexon has been in the Gamma Camera Crystal Service Business since the time of its incorporation in 1983. Crystals that demonstrate a distinct "yellow" color, or a loss of spatial resolution and uniformity or have developed "measles" (spots seen in the crystal and in your image) can be **TOTALLY RECONDITIONED WITH THE SAME WARRANTY AS THE ORIGINAL ONE.** **THE COST IS A FRACTION OF THE PRICE OF A NEW UNUSED UNIT (TYPICALLY LESS THAN 50%).**

Crystals, like diamonds, are ageless. They do not wear with **TIME OR USE.** There is nothing mechanical to wear away, and they do not damage under the normal radiation dose to patients **regardless of the number of patients scanned.**

The Refurbishment Service Includes:

- ◀ Removal of the hydrated layer (yellow) typically 0.005" / 0.010"
- ◀ No loss in SENSITIVITY since the layer removed is within the crystal thickness specification tolerance.
- ◀ New entrance window.
- ◀ Housings, which are damaged or marred, are either re-anodized or re-plated.
- ◀ Spatial resolution and uniformity is usually better than original due to new and better surfacing techniques.

Other Services Includes:

- ◀ **Broken** crystals are replaced with **NEW** crystals machined to the **EXACT** original specifications of the original unit.
- ◀ Older crystals are "Shaved" to 3/8" or 1/4" or reduced in diameter as an **UPGRADE.**
- ◀ Plastic or Glass (Pyrex) Light Pipes can be supplied and coupled with either silicone jell-like or hard-RTV compounds as desired.
- ◀ OLD and DAMAGED Light-Pipes can be re-polished or new ones fabricated to replace original ones.
- ◀ Rexon also supplies its own silicone grease **RX-688** CONSIDERED BY MANY USERS to be superior to any on the market (see Data Sheet).
- ◀ Special Silicone coupling kits of **RX-22P, RX-80, or RX-44** are also available which provide for coupling light pipes to crystal-window from soft "jell-like consistency to hard rubber-like texture.
- ◀ Special selected gain PMT's for **ALL** major brands of Cameras are available.
- ◀ Silk-Screening of diffusion mask on the light pipe is also available for most cameras.

24500 Highpoint Road, Beachwood, OH 44122-1022 USA

(24 Hrs) Phone 440-585-7086

http: // www.rexon.com

Phone 216-292-7373

Fax 216-292-7714

1 June 2001

Salvage-Service:

Broken and damaged camera plates **cannot** be scrapped or discarded in normal industrial refuse containers. This is against the OSHA and EPA regulations. The crystal is Sodium Iodide (Thallium Activated). Iodine in water is regarded as a "fish-kill" agent while Thallium is a Class "B" poison. As a service to our customers, REXON will accept at "**No Charge**" all broken and damaged crystal assemblies for proper disposition. FOR CERTAIN TYPES OF CAMERA CRYSTAL ASSEMBLIES INCLUDING ONES THAT HAVE NOT BEEN DIS-ASSEMBLED FROM THE DETECTOR HEAD (WITH PMTS AND BASES), **REXON** WILL GIVE CASH OR SALVAGE CREDIT TOWARDS PURCHASES AND SERVICES REQUIRED FROM REXON. THIS IS PARTICULARLY ADVANTAGEOUS WHEN AN OLD COMPETITOR'S CAMERA IS BEING REPLACED AT A HEALTH CARE FACILITY(**YES, EXTRA CASH OR CREDIT INSTEAD OF AN EXPENSE.**)

You can also send old RIA Well Detectors, Rectilinear Scanner Crystals, and Any Scintillation Crystal Assembly regardless of the AGE, original MANUFACTURER, and CONDITION—including BROKEN crystals for salvage or disposal at NO-CHARGE.

Contact the factory for details.

New Crystal Assemblies

REXON also supplies **BRAND NEW CRYSTAL ASSEMBLIES** to the original OEM specifications. If your need is for a completely new unit, send in your old unit or any other unit for a "Trade-in" discount. Contact the factory for details.

Accessories Refer to individual data sheets for Technical Specifications.

RX-688 REXON RX-688 optical coupling grease is a colorless, transparent gel that has excellent optical coupling properties. Comprised of a silicone compound, it reduces internal reflections and refractions in sensitive optical equipment. It is used for optical coupling PMTs to the Glass window or Plastic Lightpipes.

RX-22 P REXON RX-22P is a superior optical interface compound. Comprised of a carefully blended mixture of selected silicone compounds, it provides excellent optical coupling between the window of a gamma camera plate and a light pipe. It is compatible with both glass and plastic light pipes.

When properly cured, the interface remain soft, resilient and optically clear in appearance over a wide range of temperature and radiation exposure. The interface will not harden discolor, or bleed during normal usage.

RX-22P is highly recommended as a substitute for the optical coupling grease used for interfacing photomultiplier tubes (PMTs).

RX-688 OPTICAL COUPLING GREASE

DESCRIPTION

REXON RX-688 optical coupling grease is a colorless, transparent gel that has excellent optical coupling properties. Comprised of a silicone compound, it reduces internal reflections and refractions in sensitive optical equipment.

Specially formulated to meet the demands of optical coupling requirements, it has a non-Newtonian flow characteristic that retards flow under adverse temperature and/or stress conditions.

RX-688 is chemically inactive, non-corrosive, and low in toxicity. Spills can be cleaned with mineral spirits or methylene chloride.

Small volume packaging makes RX-688 particularly attractive for laboratory, repair and maintenance operations (RMO), and engineering department environments.



Standard Packaging for RX-688 is the 1-LB (16 Oz) jar as shown above. Smaller size jars are available by special request. Squeeze Tube dispensers are available in small and large sizes. Small tube size shown above for quantities <1 LB.

Rexon 22 P is another alternate to your optical coupling requirements. Comprised of a carefully blended mixture of selected silicone compounds, it provides excellent optical coupling between the window of a gamma camera plate and a light pipe. It is compatible with both glass and plastic light pipes. When properly cured, the interface remain soft, resilient and optically clear in appearance over a wide range of temperature and radiation exposure. The interface will not harden discolor, or bleed during normal usage. SEE RX 22 P DATA SHHET for Technical Specifications

FEATURES

- * Distributed in small capacity containers ideal for laboratory or prototype applications.
- * High clarity and excellent optical properties.
- * Provides a long lasting adhesion with excellent mechanical stability.
- * Low bleed characteristic reduces the need for de-coupling due to loss of fluid.
- * Applications include scintillation detectors, optical cameras, gamma cameras, and fiber optics.
- * Non-toxic, non-corrosive, and chemically inactive.
- * Spillage easily cleaned with mineral spirits or methylene chloride.

SPECIFICATIONS

Appearance	Clear Transparent
Worked Penetration	200 to 420
Bleed	< 1.296 (24 hr @ 100°C)
Evaporation	<5% (24 hr @ 100°C)
Refractive Index	1.457 to 1.466
Specific Gravity	1.055 to 1.060
Optical Transmission	> 79% (1 cm thick sample)
Optical Clarity Range	-17°C to 150°C
Temperature Range	-65°C to 150°C
Storage Temperature	< 25°C
Shelf Life	1 year minimum

Specifications subject to change without notice

ORDERING INFORMATION

To place an order, specify Type/Model Part Number:

Size	Part Number
2 Fluid oz.	Rx-688-2
4 Fluid oz.	RX-688-4
8 Fluid oz.	RX-688-8
1 Lb Jar	RX-688

See Scintillator Accessories Price List for current prices and quantity discounts. Or contact the factory directly or visit the website. Credit cards (VISA and Master Card) accepted.

RX-22 P OPTICAL SILICONE COUPLING COMPOUND

DESCRIPTION

REXON RX-22P is a superior optical interface compound. Comprised of a carefully blended mixture of selected silicone compounds, it provides excellent optical coupling between the window of a gamma camera plate and a light pipe. It is compatible with both glass and plastic light pipes.

When properly cured, the interface remain soft, resilient and optically clear in appearance over a wide range of temperature and radiation exposure. The interface will not harden discolor, or bleed during normal usage.

RX-22P is highly recommended as a substitute for the optical coupling grease used for interfacing photomultiplier tubes.



FEATURES

- Excellent optical interface for Gamma Camera Crystals and photomultiplier tube (PMT)/Crystal coupling in general.
- Maintains a soft, resilient and optically clear appearance over wide ranges of temperature and radiation exposure.
- Once cured, will not bleed, discolor, or harden with normal usage like ALL optical coupling greases are prone to.
- Convenient to use. The two part compound is supplied in pre-measured amounts...JUST MIX AND POUR.
- The Lightpipe in a Gamma Camera can be decoupled and reinstalled without compromising the interface.
- RX-22P provides a strongly adherent, yet flexible, interface that is IMPOSSIBLE to achieve with optical coupling greases.

ORDERING INFORMATION

To place an order, specify REXON type RX-22P Optical Interface Compound and part number. Please contact the plant for amount desired and current price.

SPECIFICATIONS

Appearance	Clear Transparent Gel
Dielectric Strength	>350 V/0.025 mm
Refractive Index	1.4346 at 425 nm
Specific Gravity	<1.00
Optical Transmission	> 99% (1 cm thick sample)
Optical Clarity Range	-50°C to 200°C
Temperature Range	-65°C to 200°C
Storage Temperature	< 25°C
Temperature Cycling	Unlimited
Shelf Life	1 year minimum
Specifications subject to change without notice	

ACCESSORIES

REXON RX-70 Silicone Degreaser is recommended as the window cleaning agent. It is imperative that the window be thoroughly cleaned prior to applying the interface compound in order to achieve the best possible bond. RX-70 removes oil and grease that cannot be cut by alcohol or acetone cleaning solutions.

PREPARATION

1. The package contains pre-measured amounts of a polysilicone resin (Part A) and a catalyst (Part B). The entire contents of both parts must be used to produce a satisfactory interface.
2. Using a metal or glass spatula, stir the contents of Part A vigorously for 2 to 5 minutes.
3. Wipe the spatula clean with alcohol or acetone and dry it. Then vigorously stir Part B for 2 to 5 minutes.
4. Pour the entire contents of Part B into Part A and mix vigorously for an additional 2 to 5 minutes. The longer mixing times are recommended, since they will promote a more complete cure.
5. Remove any air entrapped during the mixing process by subjecting the mixture to a vacuum. This causes air bubbles to rise to the surface and break. A vacuum between 25 and 29 inches of mercury is usually sufficient. Pump until the bubbles collapse; then, remove the vacuum and allow the mixture to stand in room air for 1 to 2 hours. The viscosity will increase and, when the mixture flows like a medium syrup, there is one hour of working time remaining.
6. When the polymerization process is well underway, do not move the parts to be coupled; as this will create bubbles in the interface. Allow the assembly at least an overnight cure. The epoxy cures in 24 hours at 20°C.

STANDARD OPEN WINDOW TYPE-X ASSEMBLY

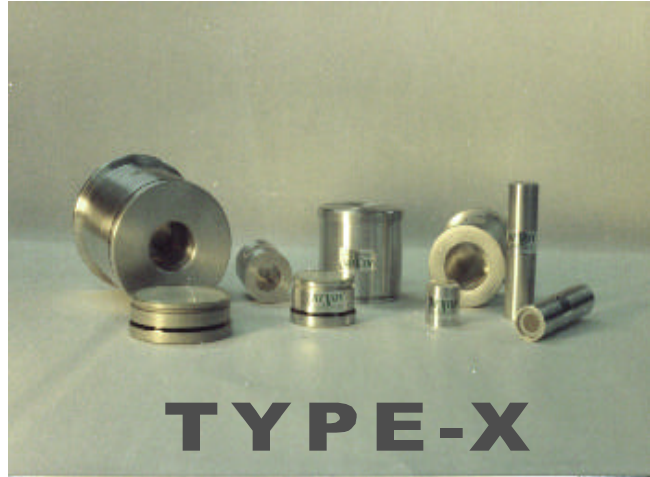
TYPE X STANDARD ASSEMBLIES

Rexon Type X Standard Assemblies is a family of scintillation detectors characterized by having a right cylindrical geometry with one face of the crystal coupled to a glass window. Each Type X detector is ready for coupling to a photo multiplier tube of your choice. The detector is encased in a metal housing with a glass optical window at one end. A variety of crystal materials and construction methods are available. Specifications which apply to all Type X detectors are shown in the general specifications table. See the Rexon Type Number Nomenclature Sheet for classification.

The Type X family includes crystal assemblies that have holes drilled either partially or completely through the cylindrical axis (top-well) or orthogonal (side-well) to the axis. The well liner is typically made from 0.25 mm thick aluminum for efficient detection of low energy radiation. Assemblies used for low energy X-ray detection have a characteristic thin window of either beryllium or aluminum with an entrance window thickness ranging from 0.025 to 0.25 mm. Gamma Camera Crystal detectors are also "Open Window" or "X" assemblies. They are produced in diverse styles particular to OEM Specifications. These same features are also available in assemblies with square or rectangular cross-sections with varying thickness. Select non-standard configurations from a catalog of special assemblies. If your requirement is not found in our extensive library of past designs, a custom design to satisfy your requirement is welcomed. Contact the factory, your area Sales Representative, or visit our website. For more robust designs, see the Data Sheet on our line of Ruggedized Assemblies used in Geophysical Exploration, Aerospace Research, and in Industrial Applications.

FEATURES

Choose from a variety of crystal materials, sizes, styles, and options.



GENERAL SPECIFICATIONS

Optical Window	3 mm UV Transmit. Glass
Reflector	Al ₂ O ₃ packed powder 1.5 mm thick, 67 mg/cm ²
Entrance Window	0.5 mm Al, 137mg/cm ²
Housing Material	Aluminum---- Standard
For Rugged Use	Stainless Steel--Optional
For Low Background	OHFC Copper---Optional
Housing Thickness	0.75 mm
Housing Diameter	Crystal Diameter + 5.6mm
Housing Length	Crystal Length + 7.1 mm

Rexon Type NAI2X2 is equivalent to Bicron Type 2R2 or Harshaw Type 8D8, or Teledyne Type S-88.

ACCESSORIES

Rexon RX-688 Optical Coupling Grease or RX-22P Optical Interface Compound is recommended for interfacing the Type X detector to any PMT.

24500 Highpoint Road, Beachwood, OH 44122-1022 USA

(24 Hrs) Phone 440-585-7086

http: // www.rexon.com

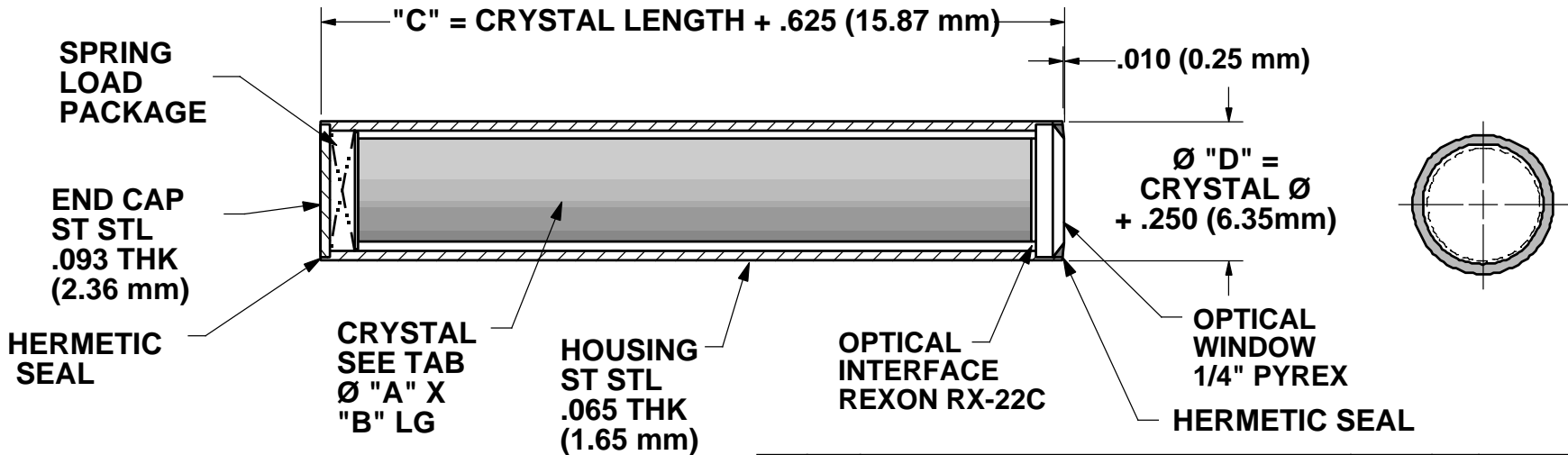
Phone 216-292-7373

Fax 216-292-7714

1 June 2001

DWG NUMBER	CRYSTAL Ø "A"	DIAMETER "D"	SUFFIX	XTAL LG "B"	LENGTH "C"
SDB9708291-1	.500 (12.7mm)	.750 (19.1mm)	-_A	1.00 (25.4mm)	1.625 (41.27mm)
SDB9708291-2	.750 (19.1mm)	1.00 (25.4mm)	-_B	1.50 (38.1mm)	2.125 (53.98mm)
SDB9708291-3	.875 (22.2mm)	1.125 (28.6mm)	-_C	2.00 (50.8mm)	2.625 (66.68mm)
SDB9708291-4	1.00 (25.4mm)	1.25 (31.8mm)	-_D	2.25 (57.15mm)	2.875 (73.03mm)
SDB9708291-5	1.125 (28.6mm)	1.375 (34.9mm)	-_E	3.00 (76.2mm)	3.625 (92.08mm)
SDB9708291-6	1.25 (31.8mm)	1.50 (38.1mm)	-_F	4.00 (101.6mm)	4.625 (117.48mm)
SDB9708291-7	1.375 (34.9mm)	1.625 (41.3mm)	-_G	5.00 (127.0mm)	5.625 (142.88mm)
SDB9708291-8	1.50 (38.1mm)	1.75 (44.5mm)	-_H	6.00 (152.4mm)	6.625 (168.28mm)
SDB9708291-9	1.75 (44.5mm)	2.00 (50.8mm)	-_I	8.00 (203.2mm)	8.625 (219.08mm)
SDB9708291-10	2.00 (50.8mm)	2.25 (57.2mm)	-_J	10.00 (254.0mm)	10.625 (269.88mm)
			-_K	12.00 (304.8mm)	12.625 (320.68mm)

CONFIDENTIAL INFORMATION
 THIS DRAWING AND ALL INFORMATION CONTAINED HEREIN ARE AND SHALL REMAIN THE EXCLUSIVE PROPERTY OF REXON COMPONENTS, INC. IT SHALL BE HELD CONFIDENTIAL, AND SHALL NOT BE REPRODUCED, COPIED OR OTHERWISE DISPOSED OFF, IN WHOLE OR IN PART WITHOUT THE PRIOR WRITTEN PERMISSION OF REXON COMPONENTS, INC.



RESOLUTION:
 8.5% FWHM @ 662keV FOR Cs137 (NaI)
 12% FWHM @ 662keV FOR Cs137 (CsI)
 AS MEASURED W/ HAMAMATSU R-1306

TYPE NUMBER:
 (CRYSTAL MTL) (CRYSTAL Ø) RX (CRYSTAL LGTH) / SS

XTAL MTL
NaI(Tl)
CsI(Na)
CsI(Tl)

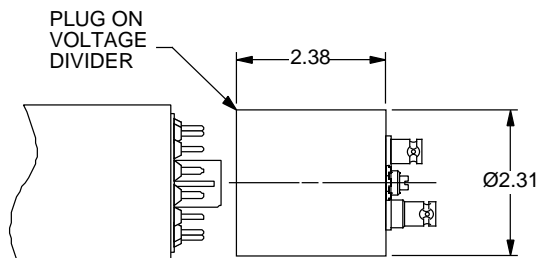
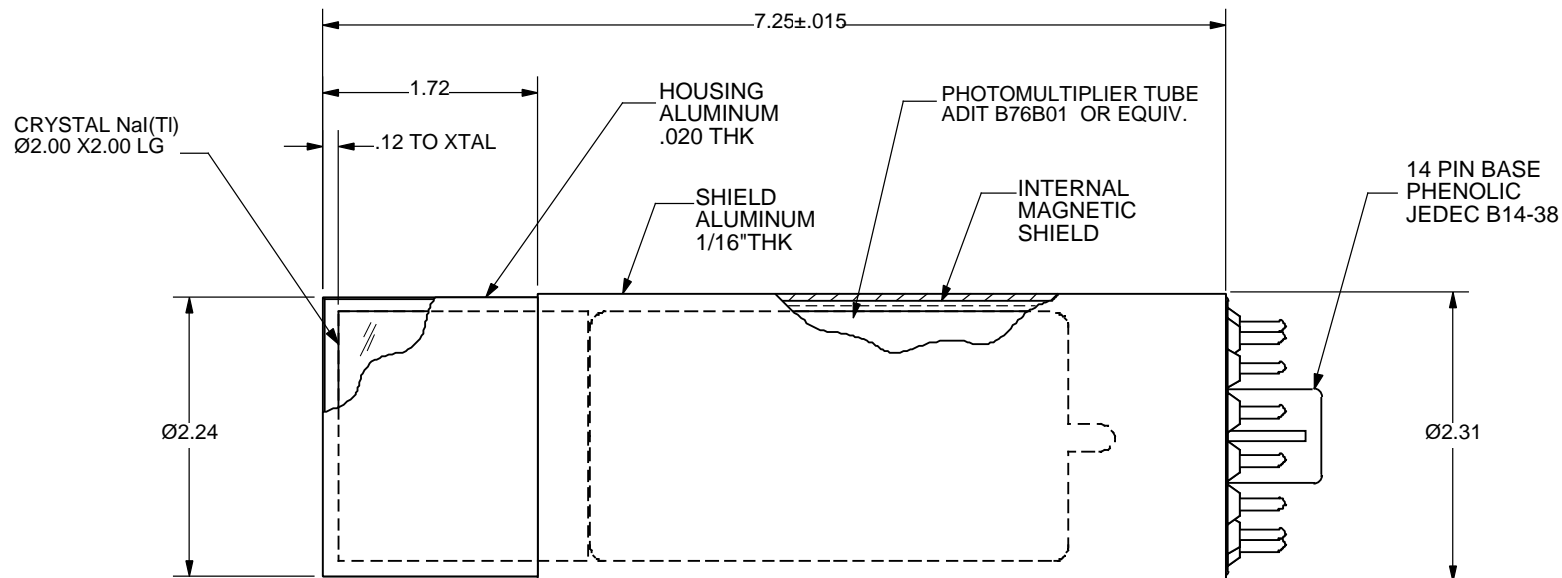
Rev	ECO	Description	Date	Apr.	Reference Number

Tolerances, Unless Otherwise Specified
 Scale: FULL
 Type: SEE NOTE ON SIDE

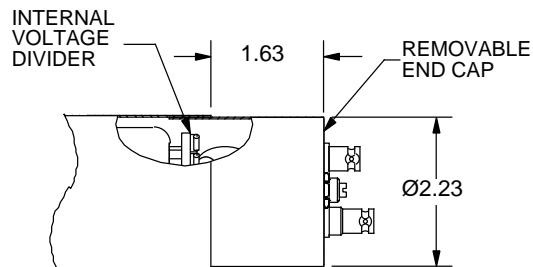
English: .XX= ±.010 .XXX= ±.005 Frac= ±.015 Angle= ±30'
 Metric (mm): .XX= ±0.25 .XXX= ±0.125
 Finish: 125 ✓
 Date: 8-29-97
 Drn By: ML
 Chk By: _____
 Material: AS INDICATED
 Revision: NONE

Assembly RX Outline

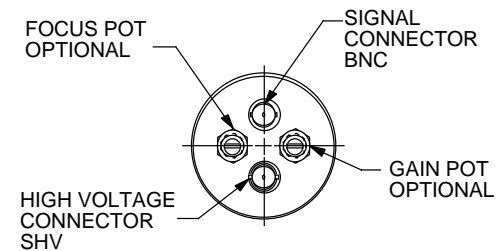
Dwg No: SDB9708291-



OPTION #1 PLUG ON VOLTAGE DIVIDER



OPTION #2 INTERNAL VOLTAGE DIVIDER



CONFIDENTIAL INFORMATION

THIS DRAWING AND ALL INFORMATION CONTAINED HEREIN ARE AND SHALL REMAIN THE EXCLUSIVE PROPERTY OF REXON COMPONENTS, INC. IT SHALL BE HELD CONFIDENTIAL, AND SHALL NOT BE REPRODUCED, COPIED OR OTHERWISE DISPOSED OFF, IN WHOLE OR IN PART WITHOUT THE PRIOR WRITTEN PERMISSION OF REXON COMPONENTS, INC.

TYPE NAI 2PX2/2

Rev	ECO	Description	Date	Apr.	Reference Number
		Tolerances, Unless Otherwise Specified	Scale: NONE	Type: NAI 2.00 PX 2.00 / 2.00	
		English: .XX = ±.010	Date: 7-20-94	Parts list: NONE	
		Metric (mm): .XX = ±0.25	Drn By: ML	Material: AS INDICATED	
		Finish: 125 ✓	Chk By: _____	Revision: NONE	
		.XXX = ±.005			
		Frac = ±.015			
		Angle = ±30'			
		24500 Highpoint Rd. Beachwood, Oh 44122			

Assembly PX

Dwg No :SDB9407201

HOUSING ALUMINUM (3)

SCINTILLATOR Ø "D" X "H" SEE TAB (2)

END CAP ALUMINUM 1/32" THK [0.81mm] (1)

OPTICAL WINDOW SEE NOTE (4)

SHIELD ALUMINUM (5)

PHOTOMULTIPLIER TUBE Ø2.0 REXON 800P WRAPPED W/ MU-METAL (6)

#4-40 X 1/8" LG SET SCREWS (2) REQ'D (7)

14 PIN BASE PHENOLIC JEDEC B14-38 (8)

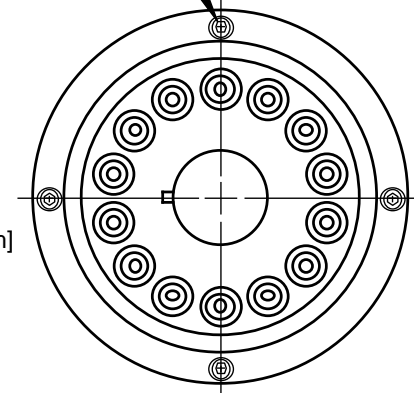
NOTE: TIGHTEN SET SCREWS ON PHENOLIC BASE AFTER APPLYING APPROX 2 LBS DOWN PRESSURE TO PMT

#4-40 X 1/2" LG S.H.C.S. (4) REQ'D (9)

Ø "D" + 3/16" [4.76mm]

2 1/2" [63.5mm]

3" [76.2mm]



STANDARD Ø2.0 PMT "MX" STYLE

NOTES:

GLASS WINDOW INSTALLED ONLY FOR HYGROSCOPIC CRYSTALS 1/8" THICK [3.18 mm]

RESOLUTION:

8.5% FWHM @ 662keV FOR Cs137 (NaI)

12% FWHM @ 662keV FOR Cs137 (CsI)

AS MEASURED W/ HAMAMATSU R-1306

TYPE NUMBER:

(CRYSTAL MTL) (CRYSTAL Ø "D") MX (CRYSTAL LGTH "H") / 2.00

FEATURES: INTERCHANGEABLE CRYSTAL SCINTILLATOR & PMT

CONFIDENTIAL INFORMATION

THIS DRAWING AND ALL INFORMATION CONTAINED HEREIN ARE AND SHALL REMAIN THE EXCLUSIVE PROPERTY OF REXON COMPONENTS, INC. IT SHALL BE HELD CONFIDENTIAL, AND SHALL NOT BE REPRODUCED, COPIED OR OTHERWISE DISPOSED OFF, IN WHOLE OR IN PART WITHOUT THE PRIOR WRITTEN PERMISSION OF REXON COMPONENTS, INC.

XTAL MTL
NaI(Tl)
CsI(Na)
CsI(Tl)
BGO

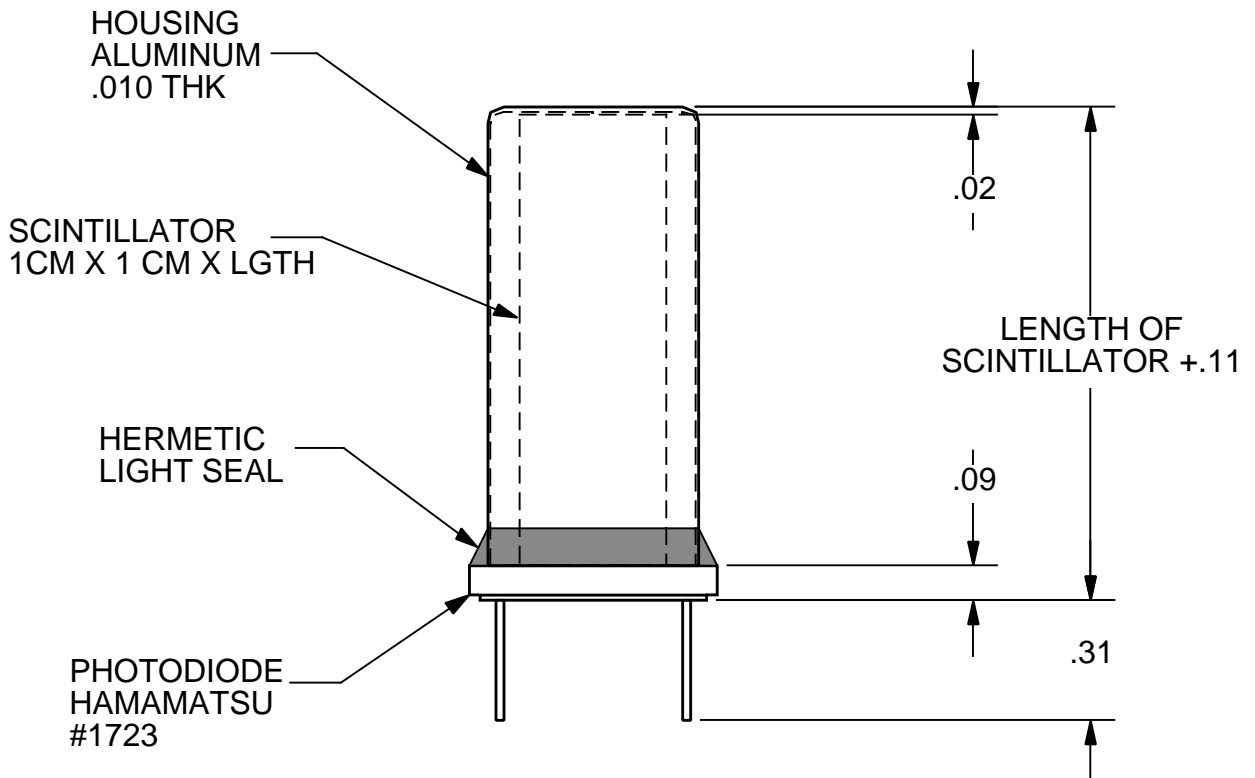
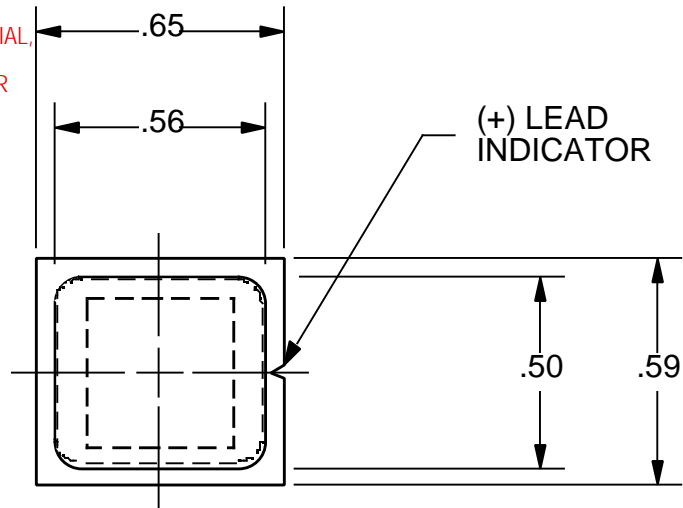
Rev	ECO	Description	Date	Apr.	Reference Number
		Tolerances, Unless Otherwise Specified	Scale: FULL	Type: SEE NOTES	
		English: .XX= ±.010 .XXX= ±.005 Frac= ±.015 Angle= ±30'	Metric (mm): .XX= ±0.25 .XXX= ±0.125	Date: 9-29-97	Parts list:
		REXON Components, Inc. 24500 Highpoint Rd. Beachwood, Oh 44122	Finish: 125 ✓	Drn By: ML	Material: AS INDICATED
			Chk By: MRF	Revision:	

Assembly MX Outline

Dwg No: SDB9709291

CONFIDENTIAL INFORMATION

THIS DRAWING AND ALL INFORMATION CONTAINED HEREIN ARE AND SHALL REMAIN THE EXCLUSIVE PROPERTY OF REXON COMPONENTS, INC. IT SHALL BE HELD CONFIDENTIAL, AND SHALL NOT BE REPRODUCED, COPIED OR OTHERWISE DISPOSED OFF, IN WHOLE OR IN PART WITHOUT THE PRIOR WRITTEN PERMISSION OF REXON COMPONENTS, INC.



TYPE NO: (SCINTILLATOR TYPE) .394 - .394 X (LENGTH) PD

Rev	ECO	Description	Date	Apr.	Reference Number
-----	-----	-------------	------	------	------------------

REXON
Components, Inc.

24500 Highpoint Rd.
Beachwood, Oh 44122

Tolerances, Unless Otherwise Specified

English: .XX= ±.010
.XXX= ±.005
Frac= ±.015
Angle= ±30'

Metric (mm): .XX= ±0.25
.XXX= ±0.125

Finish: 125 ✓

Scale: 2 X SIZE

Date: 4-13-94

Drn By: ML

Chk By: MRF

Type: SEE ABOVE

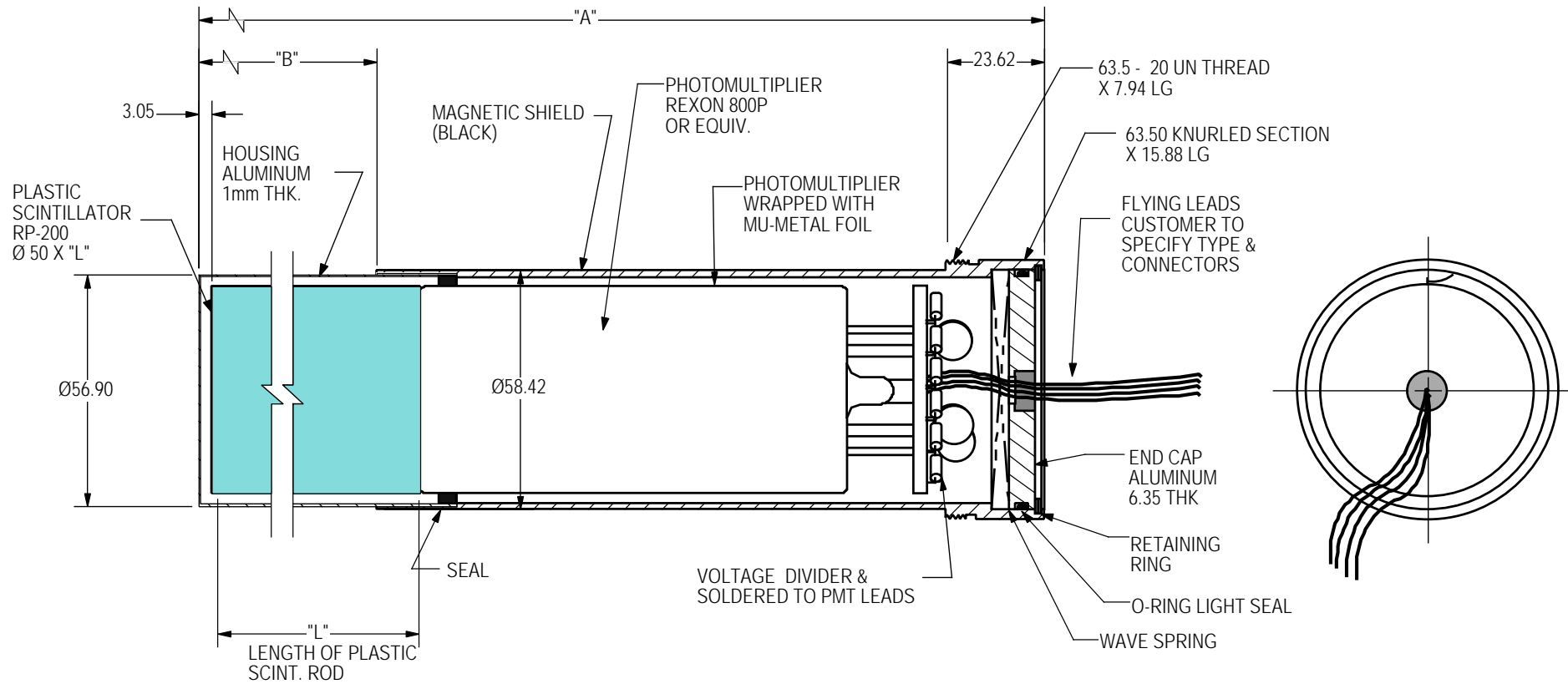
Parts list:

Material: AS INDICATED

Revision: NONE

X Assembly Outline

Dwg No: SDA9404131



INTEGRAL PLASTIC PROBE: Ø50mm

CONFIDENTIAL INFORMATION
 THIS DRAWING AND ALL INFORMATION CONTAINED HEREIN ARE AND SHALL REMAIN THE EXCLUSIVE PROPERTY OF REXON COMPONENTS, INC. IT SHALL BE HELD CONFIDENTIAL, AND SHALL NOT BE REPRODUCED, COPIED OR OTHERWISE DISPOSED OFF, IN WHOLE OR IN PART WITHOUT THE PRIOR WRITTEN PERMISSION OF REXON COMPONENTS, INC.

METRIC

-2	2000	2155.70	1992.89
-1	1000	1155.70	992.89
PREFIX	"L"	"A"	"B"

Rev	ECO	Description	Date	Apr.	Reference Number
		REXON Components, Inc. 24500 Highpoint Rd. Beachwood, Oh 44122	Scale: NONE Date: 7/21/98 Dwn By: JAS	Type: PLS 50.8 PX 1000/50.80 IV FL	
		Tolerances, Unless Otherwise Specified English: .XX= ±.010 .XXX= ±.005 Metric (mm): .XX= ±0.25 .XXX= ±0.125 Frac= ±.015 Angle= ±30'	Finish: 125 ✓ Chk By: Apprvd:	Parts list: NONE Material: AS INDICATED Revision:	

Assembly PX **Dwg No :SDB980721-**